

許可なく持ち出し禁止。

Not to be taken out without permission.

以下も参照のこと。

See also:

<http://www.el.u-tokai.ac.jp/ryuta/patterns.htm>



Test patterns, SPring-8 20B2 room

Normal

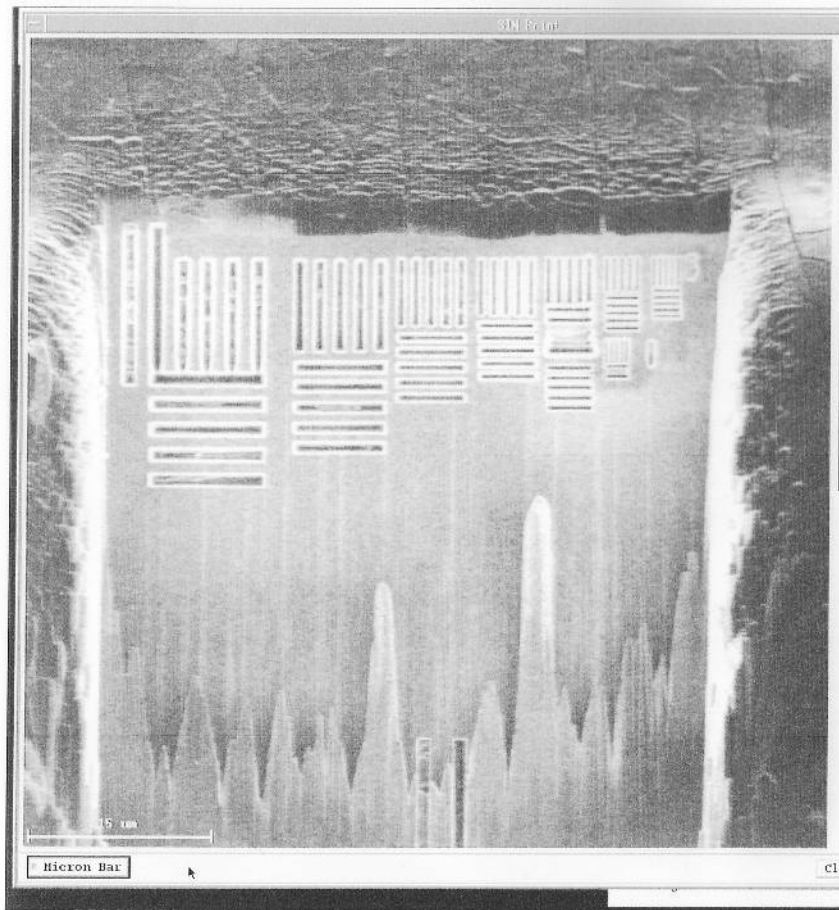
	id	Origin	Elem	Description
	080116AL "Al test pattern"	0.25 mmφ wire	Al	Pitch: 2.0, 1.6, 1.2, 1.0, 0.8, 0.6, 0.5, 0.4 um "1.0 ~ 0.2 um"
	080425AL	0.25 mmφ wire	Al	Resin embed Pitch: 2.0, 1.6, 1.2, 1.0, 0.8, 0.6, 0.5, 0.4, 0.3, 0.2 um

Nano

	121011AL	0.15 mm rod	Al	Resin embed Pitch: 2.0, 1.0, 0.5, 0.4, 0.3, 0.2, 0.18, 0.16, 0.14 um
	110906AL	0.1 x 0.1 mm rod	Al	Pitch: 1.0, 0.8, 0.6, 0.5, 0.4, 0.3, 0.2, 0.15 um
	130312AL	0.12 mm rod	Al	Pitch: 2.0, 1.0, 0.5 um, 300, 240, 180, 140, 120, 100, 90 nm
	130315AL	0.10 mm rod	Al	Pitch: 2.0, 1.0, 0.5, 0.40, 0.35, 0.30, 0.25, 0.20 um, 180, 160, 140, 120, 100, 90, 80 nm
	130524AL	0.10 mmφ wire	Al	Pitch: 2.0, 1.0, 0.5, 0.40, 0.35, 0.30, 0.25, 0.20 um, 180, 160, 140, 120, 100, 90, 80 nm

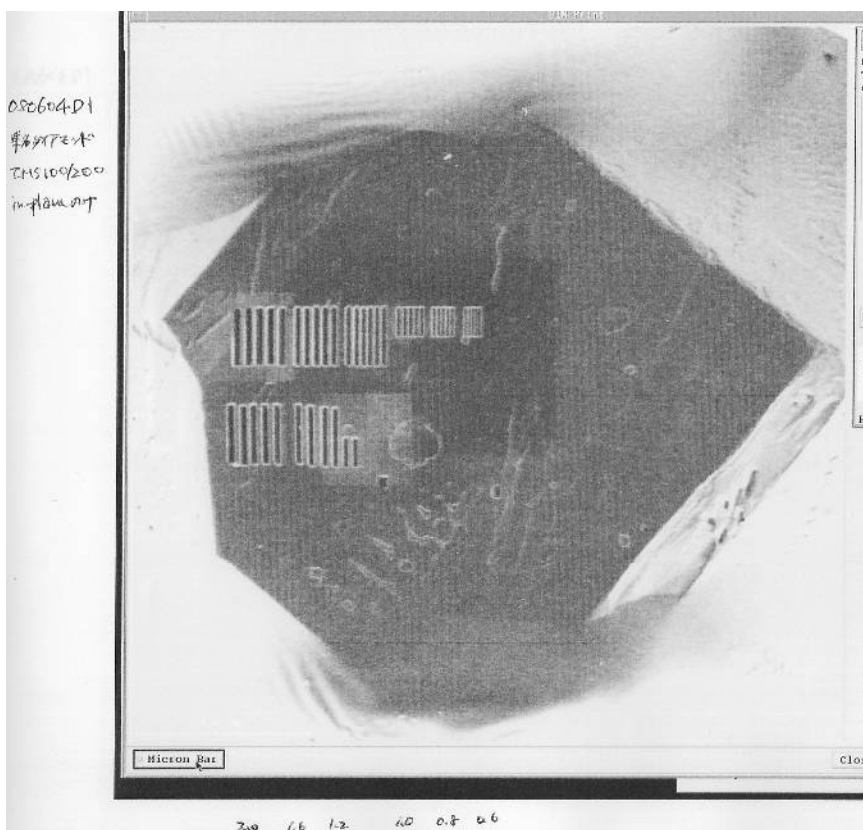
Diamond

	080604D1	wire	Diamond	In-plane only; Pitch: 2.0, 1.6, 1.2, 1.0, 0.8, 0.6 um
--	----------	------	---------	---



1.0 0.8 0.6 0.5 0.4 0.3 0.25
(0.2)

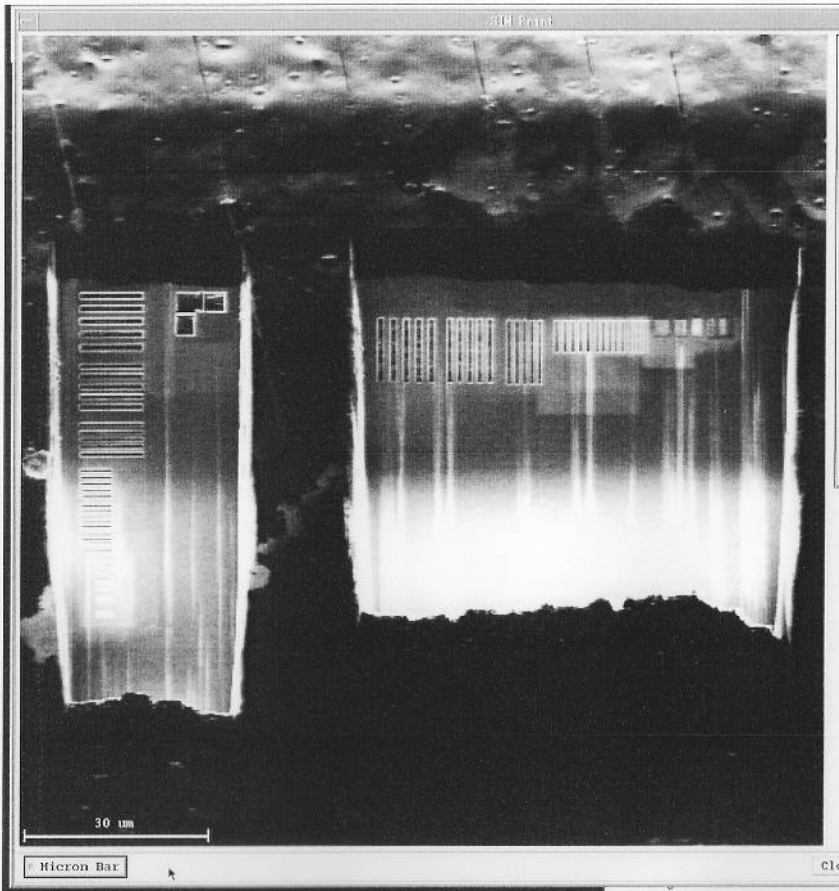
080116AL



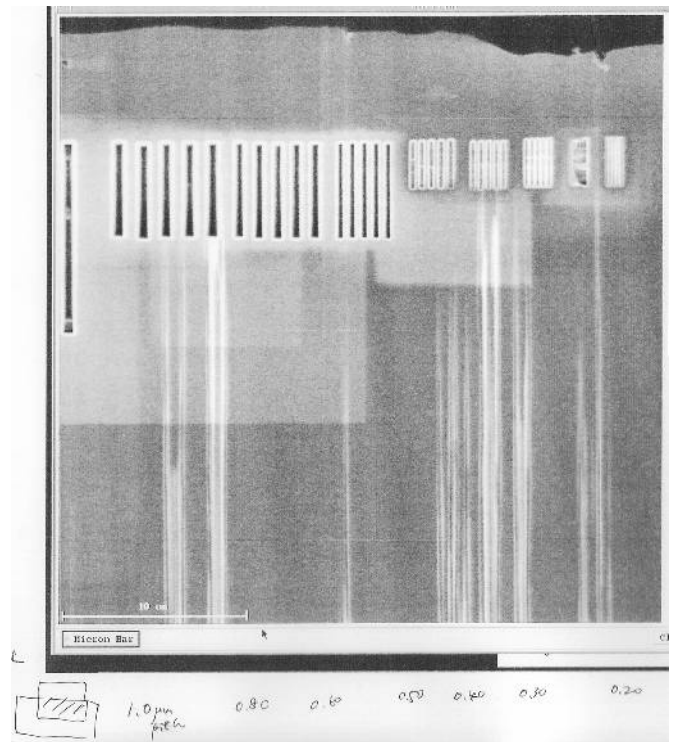
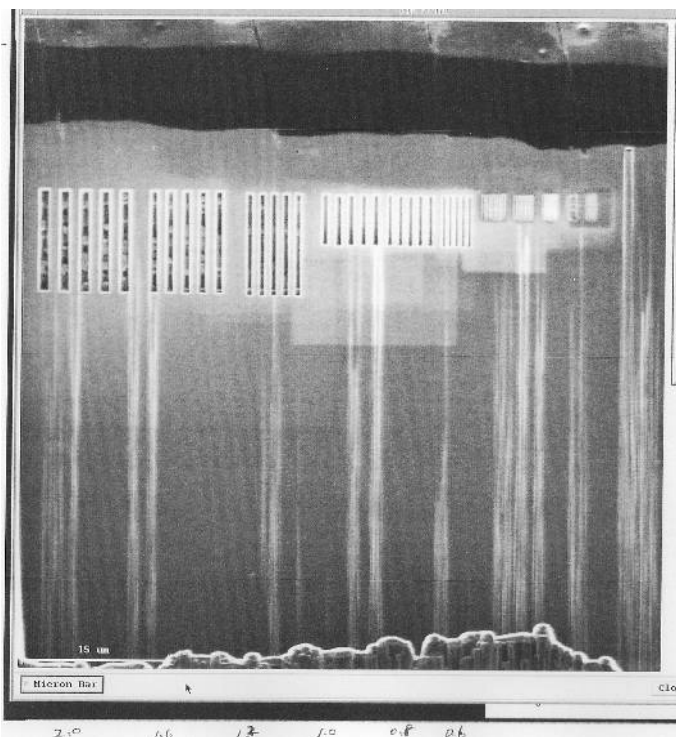
2.0 1.6 1.2 1.0 0.8 0.6

080604D1

080425AL



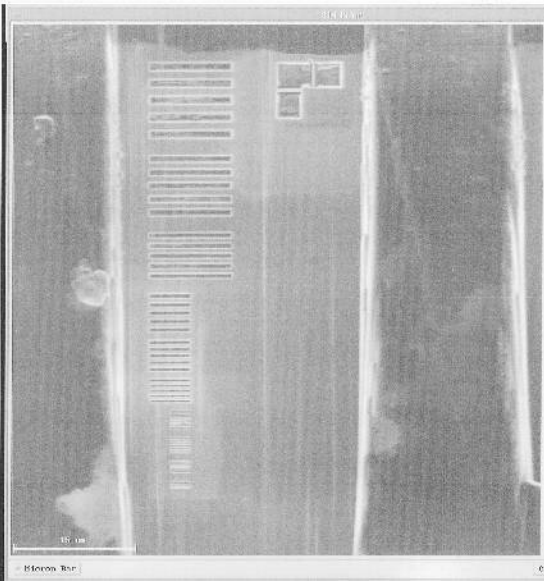
080425AL



080425AL

080425AL
in-plane
series,
overall
zoom patch

1.6
1.2
1.0
0.4
0.6

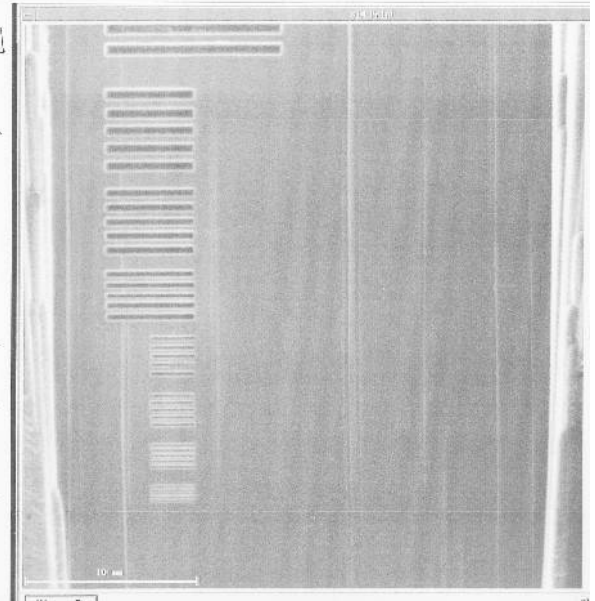


080425AL

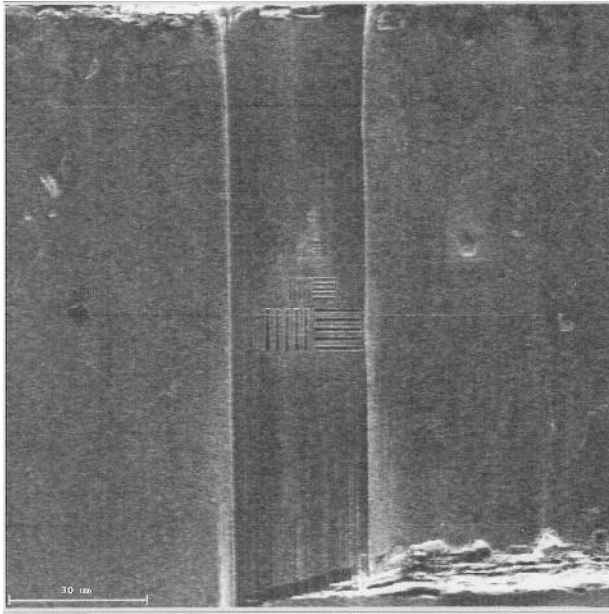


patch 10µm

0.8
0.6
0.5
0.4
0.3
0.3



121011AL

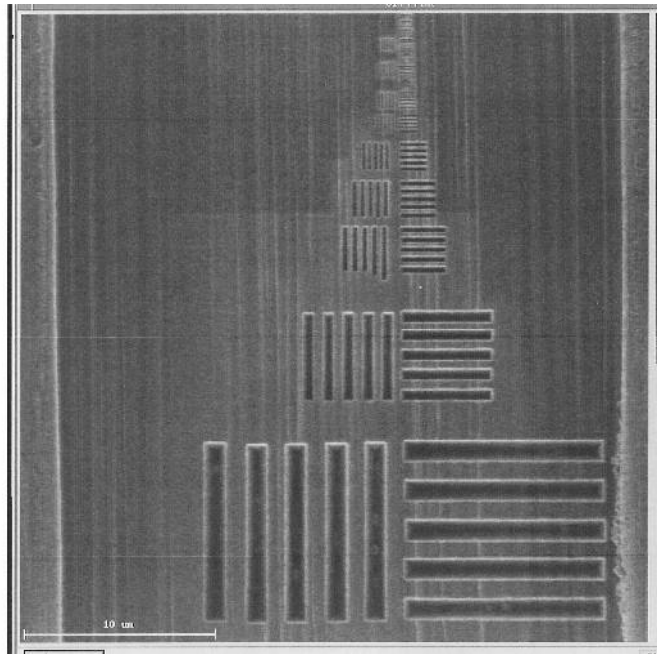


0.14
0.16
0.18
0.2

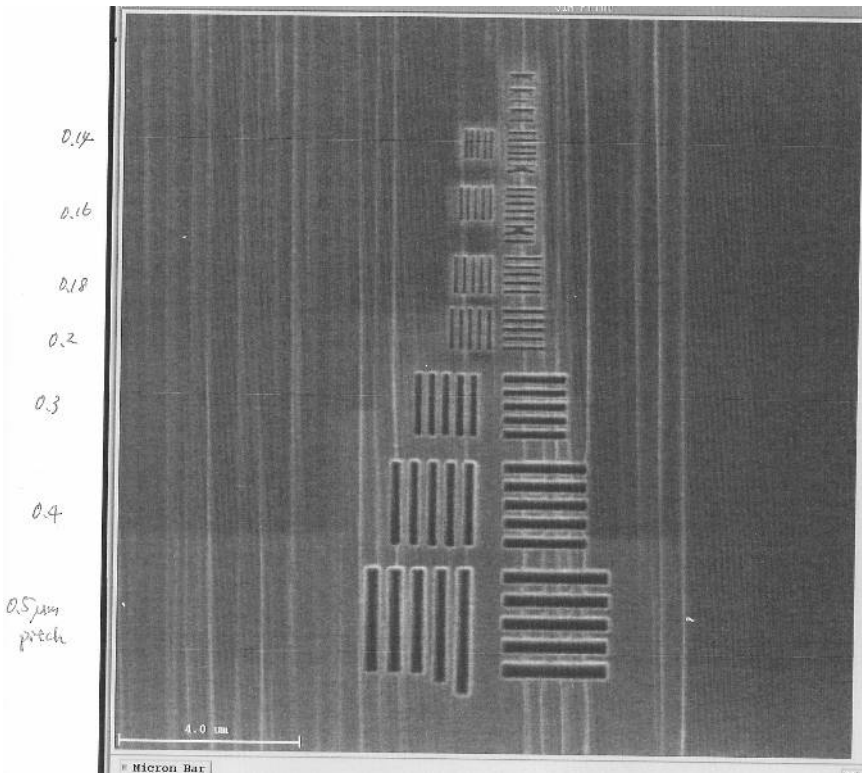
0.3
0.4
0.5 μm
pitch

1.0 μm
pitch

2.0 μm
pitch



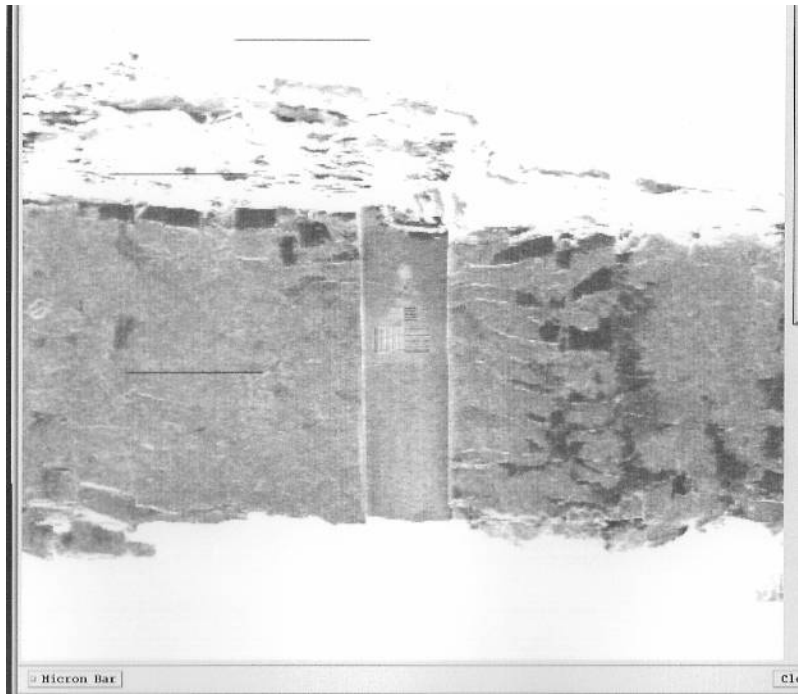
121011AL



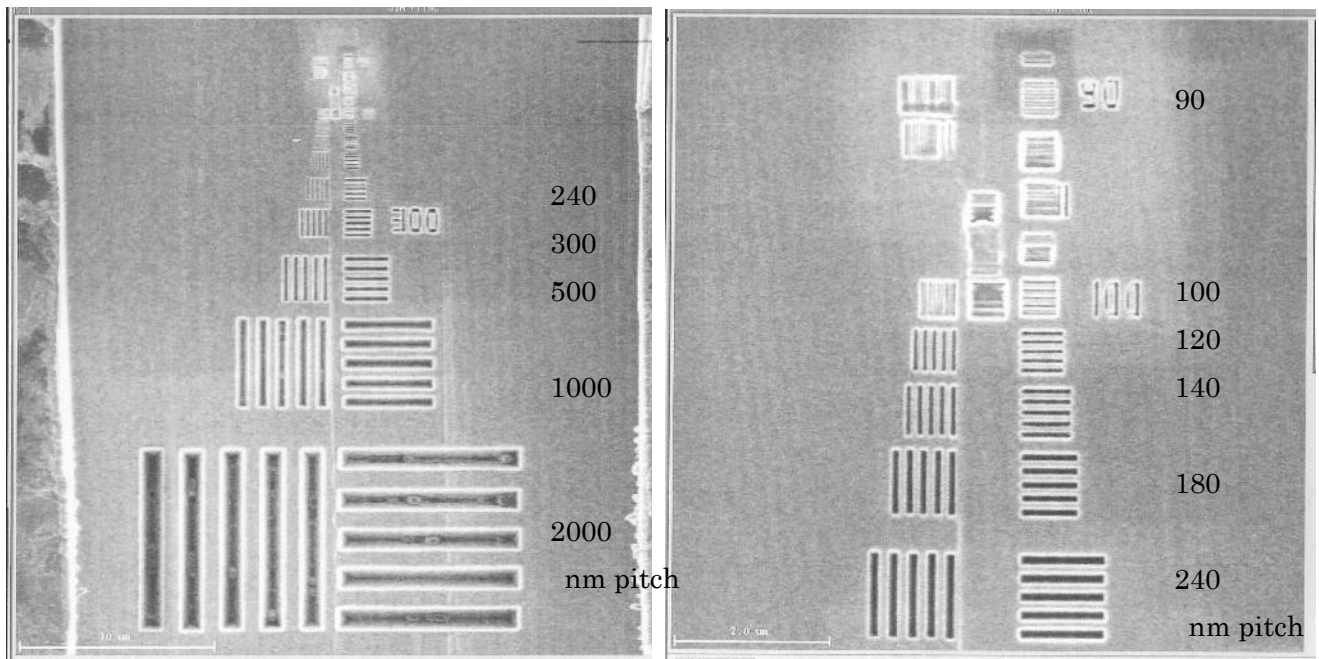
0.14
0.16
0.18
0.2

0.3
0.4
0.5 μm
pitch

130312AL



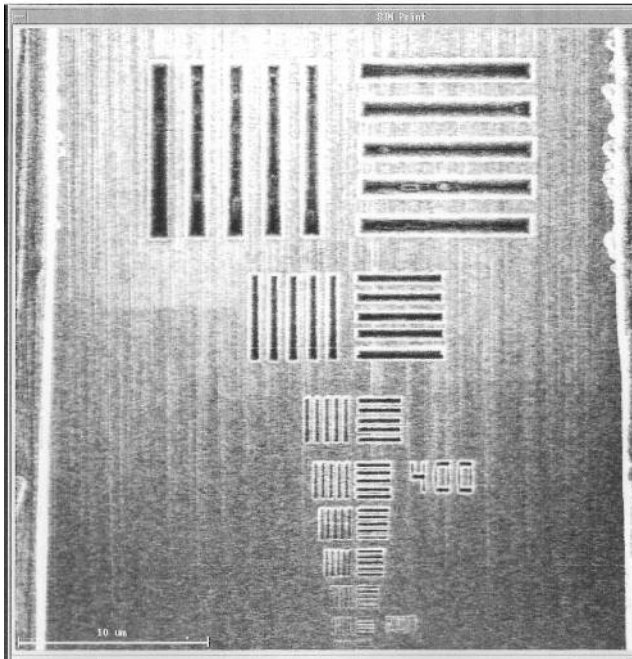
130312AL



130315AL

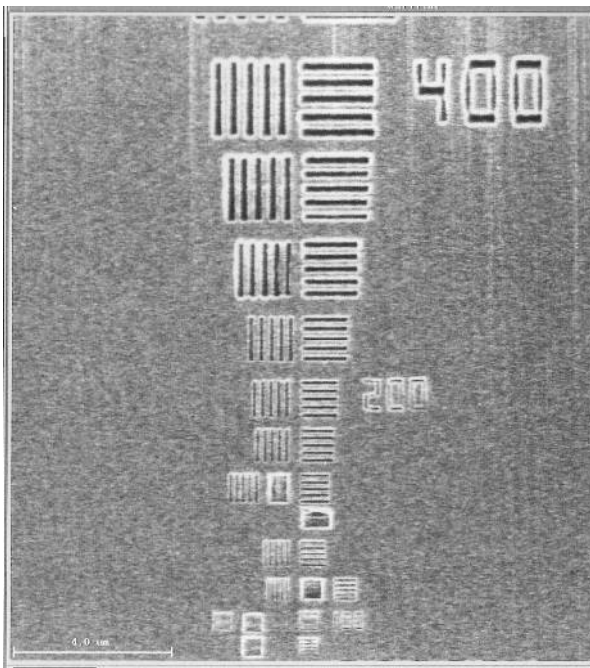


130315AL
Handwritten notes and a small diagram of a cylindrical component.

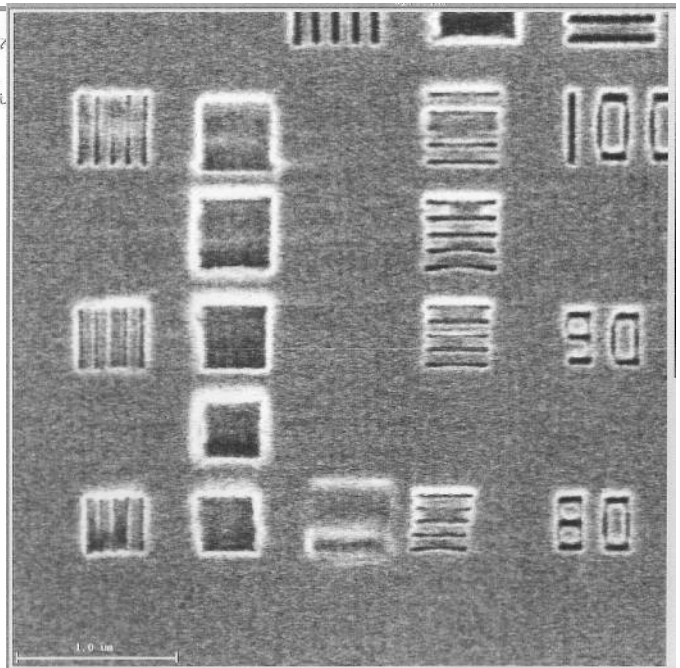


130315A2
2000 nm pitch
1000
500
400
350
300
250
200

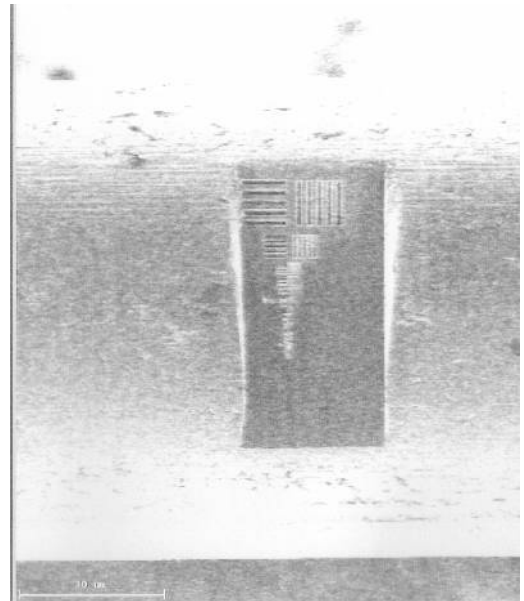
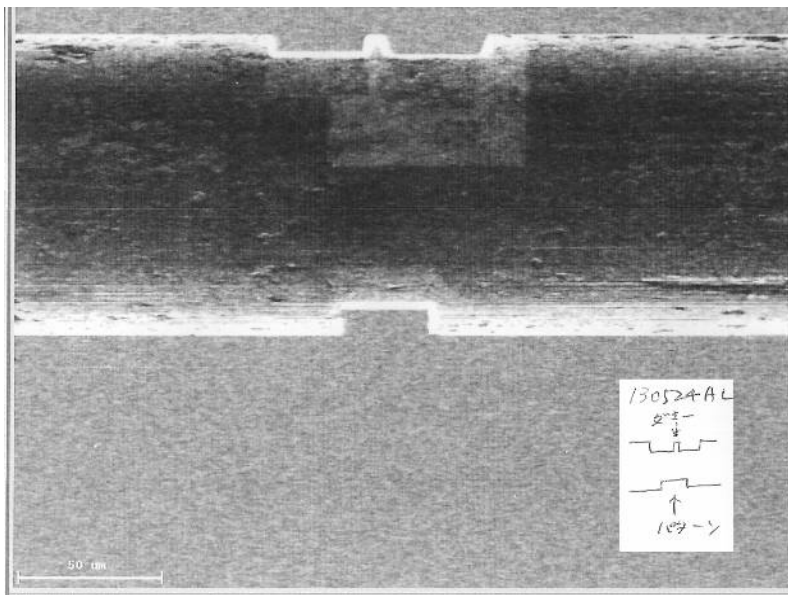
130315AL



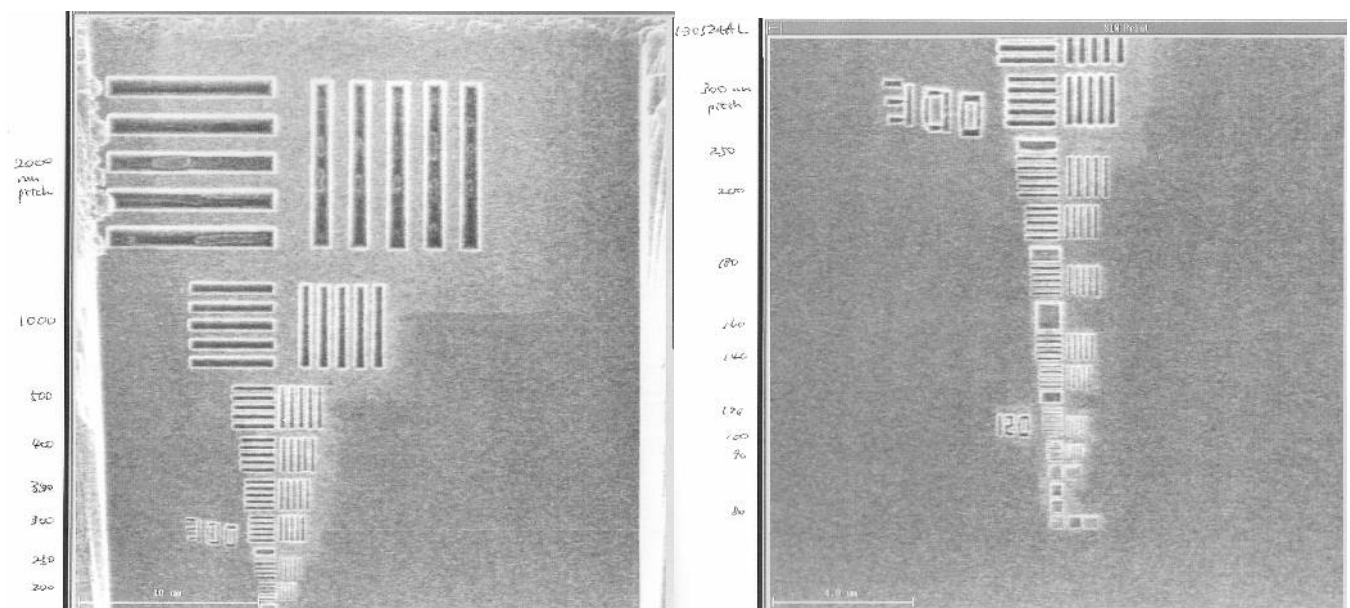
130315A
400nm pitch
350
300
250
200
180
160
140
120
100



130524AL



130524AL



130524AL

24AL

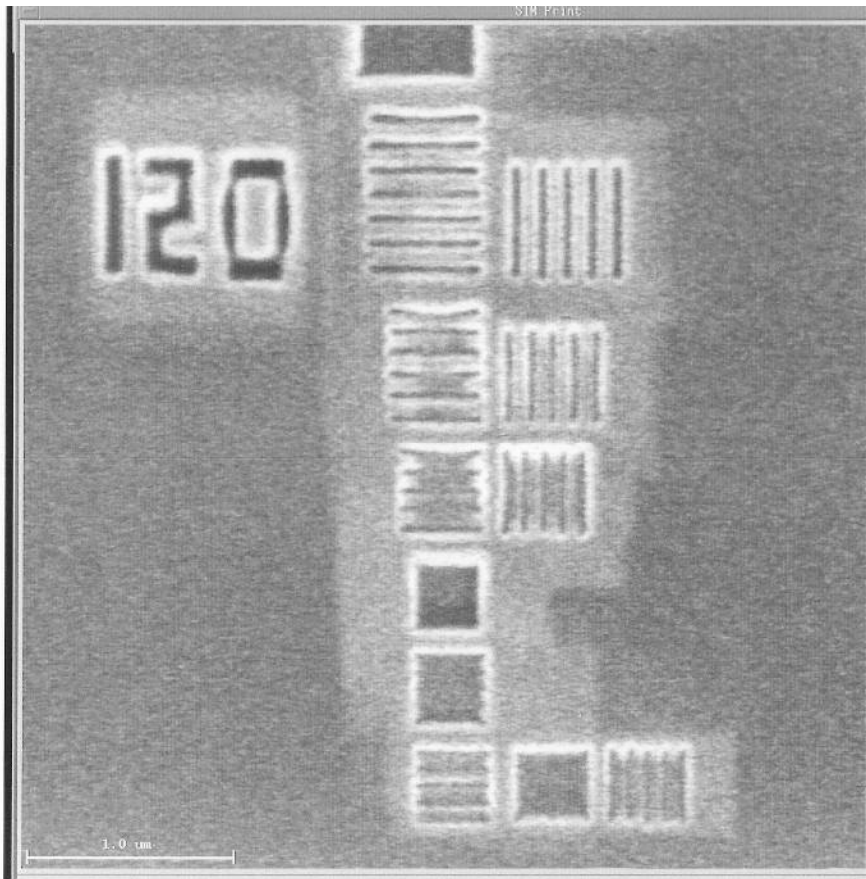
STM Probe

120 nm
pitch

100

90

80



1.0 μm